



INTERNATIONAL ETCHELLS

THE ULTIMATE ONE DESIGN RACING YACHT

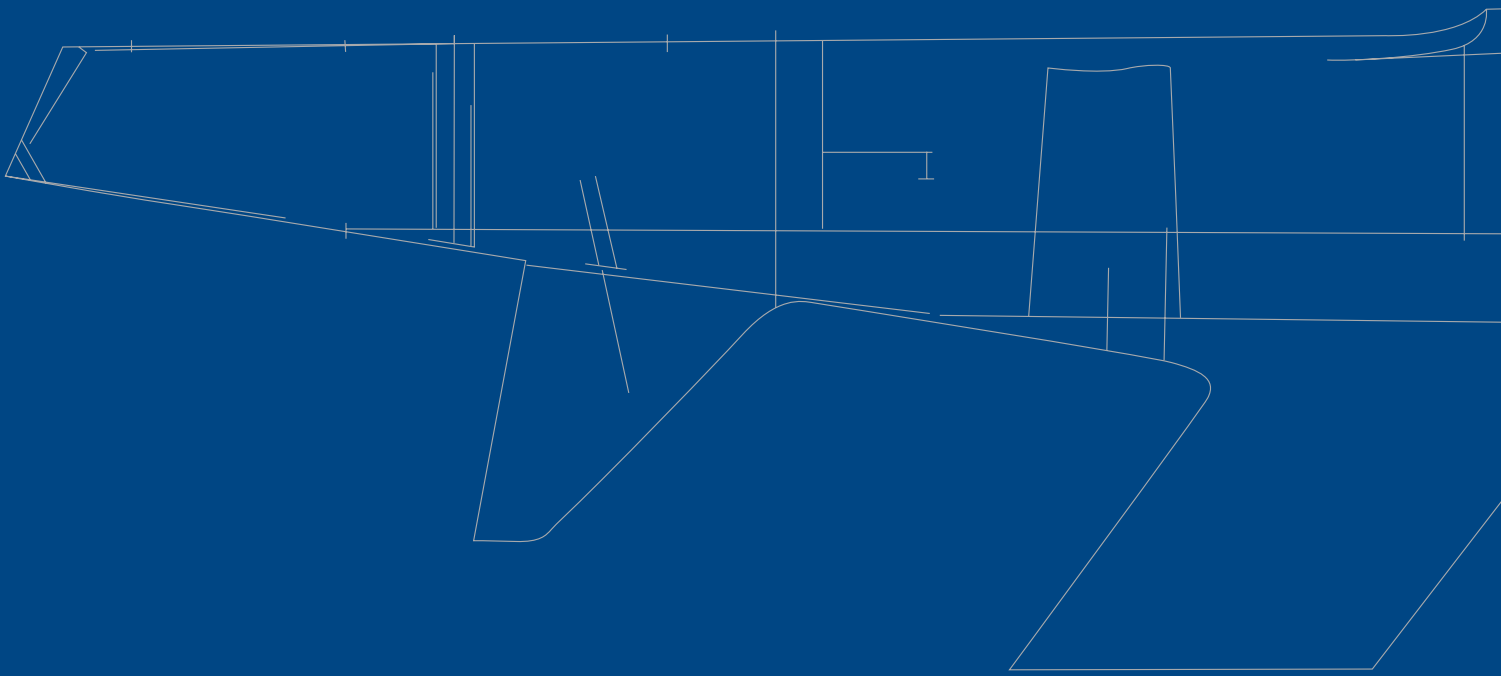


www.davidheritage.co.uk

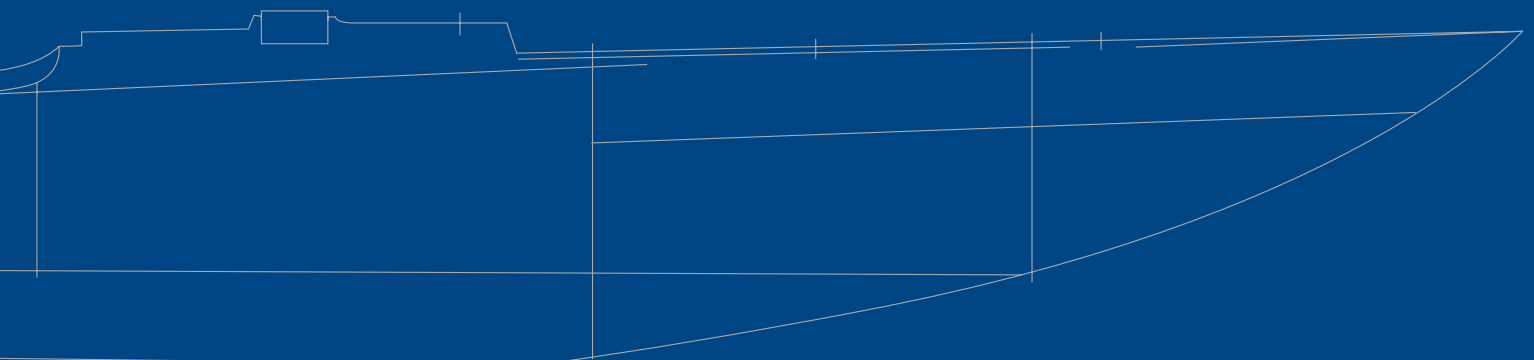
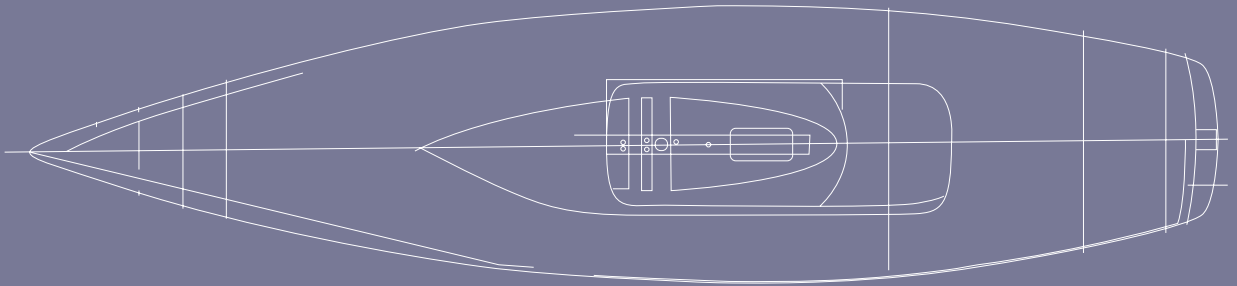
The Etchells strict one-design principle was established from the outset and is controlled by a strong, well-administered class association.

The hull is built with premium high performance resins and glass cloth, which combined with accurate temperature controlled post curing techniques ensures quality and a long, trouble free hull life. Control of construction ensures quality and uniformity. The Etchells fast, stable, and sleek design, enables it to be sailed comfortably and competitively.

ONE DESIGN RACING YACHT



www.davidheritage.co.uk



INTERNATIONAL ETCHELLS TO STANDARD SPECIFICATIONS AND CLASS RULES.

Hull and Deck

High quality controlled hand lay-up using the best resin and glass cloth from I.S.A.F. approved moulds in temperature control workshop and post cured to resin manufactures specification to ensure maximum hull and deck stiffness.

Colours

■ White ■ Light grey

Specials

Double action bilge pump fitted on mast beam, glass tiller and easy adjusted mast rake system fitted as standard.

Foils

Fully optimised shape within class rules
CNC milled keels available. Price on request.

Fit out

Using top quality ball bearing blocks and cleats. Machine tapered Main, Jib and Spinnaker sheets TackTic micro compass. Safety equipment to class rules.

Rig

Mast, boom and spinnaker pole from Proctor masts, fully rigged with Dyform standing rigging and calibrated turnbuckles, 1x19 wire running rigging and spectre spinnaker halyard adjustable mast step fitted as standard.



David Heritage Racing Yachts
Unit 117A
Medina Village, Thetis Road,
Cowes, Isle of Wight
PO31 7DJ

Tel: +44 (0)1983 280 065
Fax: +44 (0)1983 280 140
Mobile: 07779 653 393

For further information please visit:
www.davidheritage.co.uk